

CO₂RE[®] Intima

Expanding treatment
options for women

CO₂ laser system for Women's Health



 **CANDELA**[™]
Science. Results. Trust.

Well-established CO₂ technology treats skin or soft tissue³

- Customizable treatment capability with handpiece and lens combinations to provide physician control
- Greater precision, cleaner incision, and less scarring compared to traditional surgical methods⁴

Minimize physician fatigue with articulated arm and featherweight handpieces

Gynecology-specific selection of handpieces and lenses

Intuitive touch-screen interface stores and recalls user preferences

Precision internal scanner digitally synchronized with laser pulse generator

Compact, quiet, easily mobile, and portable

Comprehensive treatment options with CO₂RE Intima¹

- Vaginal atrophy (symptoms like vaginal dryness and discomfort, or dyspareunia caused by thinning, drying and loss of elasticity and pliability of the vaginal mucosa epithelium)
- Vaginal rejuvenation
- Ablation and resurfacing of soft tissue
- Surgical scar tissue
- Labiaplasty
- Conization of the cervix such as vulvar and vaginal intraepithelial neoplasia (VIN, VAIN)
- Leukoplakia (vulvar dystrophies)
- Condyloma acuminatum



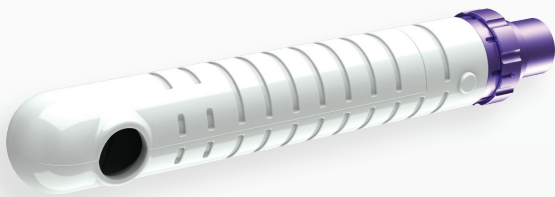
One solution, many applications

The CO₂RE® Intima system is uniquely engineered to transform the way you provide treatments for many gynecological needs. When united with minimally invasive, single-use Intima handpieces, the compact CO₂RE system provides a versatile yet simple and efficient solution for the incision, excision, ablation, and coagulation of targeted tissue, including treatment of vaginal atrophy and rejuvenation.¹

Discover how to enhance your office practice portfolio while restoring patient confidence.

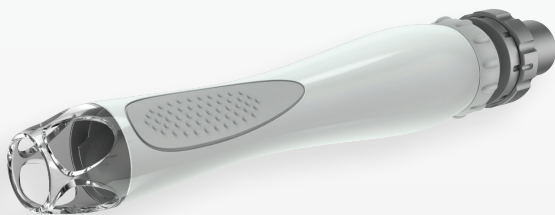
Customized handpieces for treatment of the introitus, vaginal canal, and external genitalia

- Accurately target and treat tissue with ergonomic, pen-like precision²
- 360° rotation capability provides ease of use on tissue along the vaginal canal
- Single-use handpieces guarantee ready-to-use product for every patient, thereby helping control cross-contamination risk
- Ability to treat a range of skin concerns with pre-set or individualized treatment options



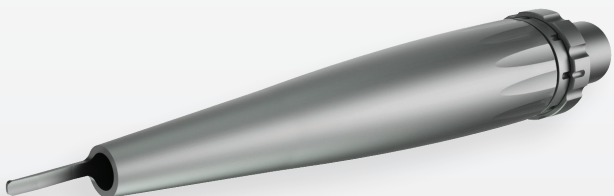
Single-Use Regular Internal Handpiece

30-mm handpiece designed to treat the vaginal canal of most patients



Single-Use External Handpiece

Designed to treat the introitus and external genitalia



Reusable Surgical Handpiece

Designed to incise or excise soft tissue



SYSTEM SPECIFICATIONS

Laser Type	CO ₂
Wavelength	10,600 nm
Laser Emission Mode	Pulsed
Output Power	60 Watts (maximum peak)
Laser Beam Energy	Variable from 1-80 mJ
Pulse Repetition Rate	Up to 16.7 kHz
Pulse Duration	20-1166 µsec
Power Stability	±1.5 Watts (±5%)
Mode Quality (M ²)	<1.2
Beam Size	Ø 1.8 ±0.5 mm
Beam Divergence	7.5 ±0.5 mrad (full angle)
Polarization	>100:1 linear (orthogonal to mounting pads)
Maximum Scan Area	10 mm diameter
Aiming Laser	5 mW, 650 nm (red) diode laser
Articulated Arm	Lightweight, aluminum fiber, 7-joint, pneumatically balanced Treatment radius at full arm extension: 85 cm (33.5") Horizontal rotation: 360°
Lens Assemblies	150 µm spot size 120 µm spot size (optional)
Handpiece	Single-use or surgical
User Interface	10.4" high-resolution
Laser Emission Control	Footswitch
Laser Emission Indicators	Solid amber LED in Standby and Ready modes Flashing red LED during laser emission
Electrical Requirements	100-240 VAC self-sensing 50-60 Hz, 7.1 A, single phase
Dimensions	40 cm x 44 cm x 177 cm (15.75" x 17.3" x 70")
Weight	26 kg (58 lbs)

In-office treatments designed to confidently treat your patients with ease

- Small footprint allows you to easily perform office-based procedures
- Simple in-office setup for gynecological applications
- Efficient procedural time, in as little as 10 minutes for each treatment
- Minimally invasive, non-hormonal, energy-based treatment
- Single-use handpiece optimizes workflow enhancing patient safety

For more information on CO₂RE Intima System or to contact a Candela sales professional, visit candelamedical.com/na/product/co2re-intima

1. CO₂RE Laser System © 2013. 2. CO₂RE Intima design. Candela, data on file. 3. DeLeon FD, Baggish MS. Lasers in gynecology. Glob Libr Womens Med. The Global Library of Women's Medicine. 4. Bellina JH, Fick AC, Jackson JD. Lasers in gynecology: an historical/developmental overview. Lasers in Surgical Medicine 1985;5(1):1-22.